



SWANCOR HOLDING CO., LTD. Corporate Headquarters

No. 588, Dongmin Road, Nantou City, Nantou County 543006, Taiwan
 TEL : +886-49 225 5420
 FAX : +886-49 225 1534
 swancor@swancor.com

S-WANLAI CO., LTD

No. 588, Dongmin Road, Nantou City, Nantou County 540006, Taiwan
 TEL : +886 49 225 5420
 FAX : +886-49 225 1534
 Regener@swancor.com

SWANCOR RECYCLING TECHNOLOGY (JIANGSU) LTD.

No.26, Xieixin Road, Funing Economic Development Zone, Yangcheng, Jiangsu 224400 China
 +86-515-68695998-581
 +86-515-68695998-581
 Regener@swancor.com

SWANCOR NETHERLANDS B.V.

p/a Plant one Rotterdam B.V. Merseyweg 10, 3197 KG Botlek Rotterdam, Netherlands
 +31-616640087(NL)
 Regener@swancor.com



Low Carbon Sustainable Recycled Materials & Technologies

REVOFIBER™

The Material Revolution

RECYCLED CARBON FIBER



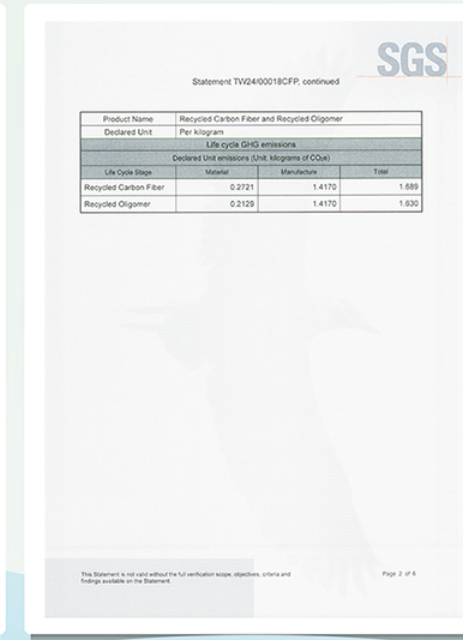
International Certificate

100% Recycled Carbon Fiber



CARBON FOOTPRINT

ISO 14067 : 2018



Compare with virgin carbon fiber carbon footprint of REVOFIBER™ is lower 97%

carbon footprint of REVOFIBER™ ↓97%

Obtained Date : 2024-01-22 Virgin Carbon Fiber : TC3SR

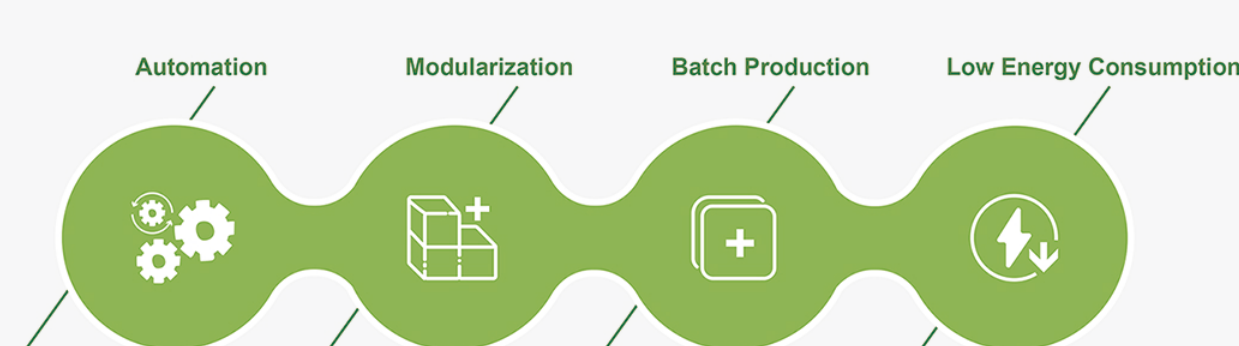
FRP Recycling Plants and Capacity

Capacity

Romania	Jiangsu China	Nantou Taiwan (Trial Site)
150 tons/year (Y2025)	CleaVER: 150 tons/year Microwave: 120 tons/year	CleaVER: 40 tons/year



Features



REVOFIBER™

Application

Fiber

- Variety length available (0.5cm - 50cm)



Pellet

- Fiber length 0.5cm - 1cm



Mat

- Fiber length 8cm - 12cm



Veil

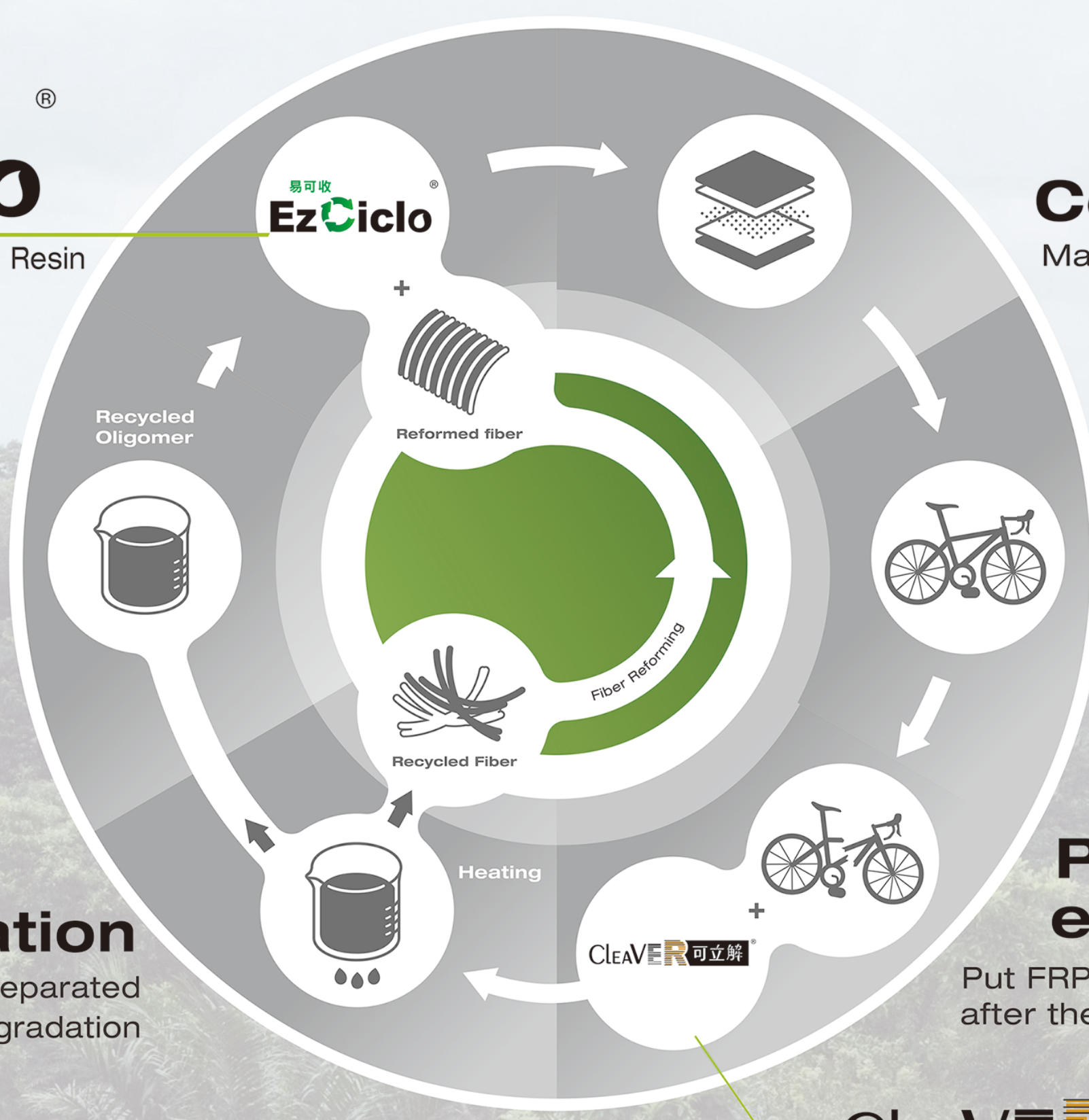
- Fiber length 8cm - 12cm



Blended Yarn



The Fiber Source



Composite
Made from EzCiclo and fibers

Product

Product end-of-life
Put FRP & CleaVER into the reactor after the product is disposed



REVOFIBER™ Products

CHOPPED FIBER

- Improve recycling rate, strength and stiffness of engineering plastics.
- Meet low carbon footprint requirements.
- Remove resin from scrapped CFRP, resize and chop into sheet.

Length(mm)	String Content	Sizing(%)	Volume Density (g/L)	Application
3-30	PU	4-6	380-420	PA6 - PA66 - ABS
3-30	Epoxy	4-6	380-420	PC - ABS - PPO
3-30	PP	4-6	380-420	PP - PE
3-30	PE	4-6	380-420	PP - PE
3-30	Heat Resistant	4-6	380-420	PEEK - PPA
3-30	NA	4-6	380-380	carbon mat , carbon clothe , carbon paper

Datasheet of T100 : T100

PELLET

Property	PA6 +15% Swancor rCF	PA6 +30% Swancor rCF
Tensile Modulus (MPa)	8,000-9,000	17,000-18,000
Tensile Strength at Break (MPa)	105-115	160-170
Tensile Elongation at Break (%)	2-3	1-2
Flexural Modulus (MPa)	6,500-7,500	14,000-15,000
Flexural Strength (MPa)	160-170	240-250

VEIL

- rCF content: 85%.
- Fibers evenly distributed, high resin adsorption, easy for processing.
- Product customization: Weight, Attributes.

Property	FAW 30g/m²	FAW 50g/m²
Width (mm)	1,000-1,270	1,000-1,270
Weight per unit area	28-32	48-52
Longitudinal Tension (Kg/15mm)	0.31	0.69
Lateral Tension (Kg/15mm)	0.12	0.19
Thickness (mm)	0.26-0.32	0.40-0.46

All property values shown in this data sheet are the representative values and not minimum value of this material

MAT

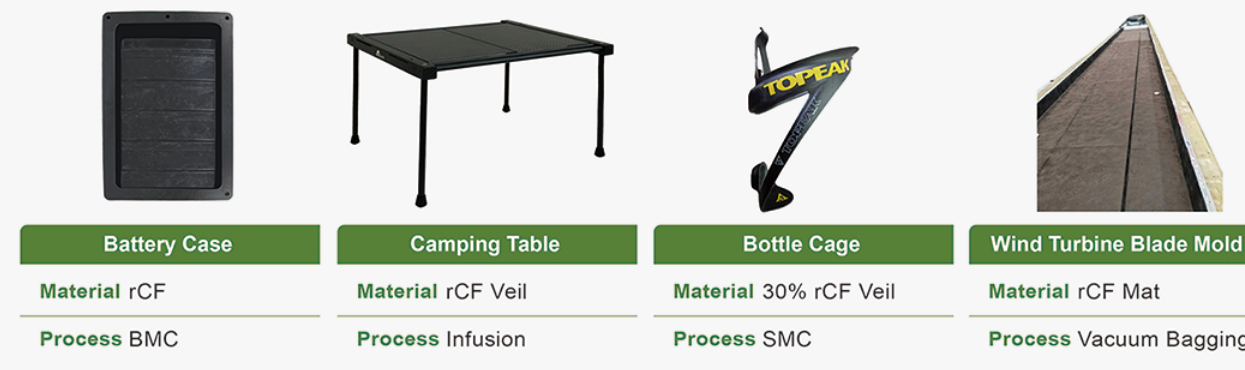
- Reinforcing material to be applied for exterior and composite materials.
- High strength and hardness, comprehensive range of applications.
- Product customization: Weight, Attributes.

Property	rCF Mat
Width (mm)	1,000
FAW 30g/m²	130-500

CASES



Material 30% rCF Process SMC | Material 50% rCF Process BMC | Material 50% rCF Process Injection Moulding | Material 30% rCF Process SMC



Material rCF Process BMC | Material rCF Veil Process Infusion | Material 30% rCF Veil Process SMC | Material rCF Mat Process Vacuum Bagging



Material 25% rCF Process Compression Moulding | Material rPA6+rCF Process Injection Moulding | Material rPA6 +20% rCF Process Injection Moulding | Material rPA6 +15% rCF Process Injection Moulding



Material rPA6 + 15% rCF Process Injection Moulding | Material PPO + 15% rCF Process Injection Moulding